



2 YEAR OLD

Bull Gale



MARCH 16,  17, 18 *2022*

FERTILE, FUNCTIONAL, PRACTICAL & PREDICTABLE
ANGUS GENETICS

WELCOME

to our 10th Annual Online Offering!



Welcome and thank you for taking the time to evaluate our catalogue and offering. We hope everyone is getting their share of snow. It sure raises optimism that we will once again have some fresh, full dugouts and lush green grass come spring.

It's been ten years since our first offering through this online bidding format and has since proven to be a new way of marketing cattle. We, and by all reports you, our customer, still enjoy the simplicity, convenience, and cost effectiveness of it. This, and allowing our customers to determine the value of our bulls has really been the highlight and goal since its inception.

Again, the bulls are developed and presented without the big push on feed and have never had their feet or hair trimmed. We value transparency in our program and believe the cattle need to be evaluated for what they truly are. We don't conduct "bull tests" to determine gainability either. This is actually an oxymoron and is an outdated method that leads producers down the wrong path. A bull "test" actually removes challenges and rather, gives animals every opportunity to succeed. This only has merit in a world of low costs and lord knows that world is far behind us. Instead, we prefer to "test" through our cows, managing them under real commercial conditions. Every bull we offer, sells without the assistance of calving or nursing and is from a mom that calves on time and sports good feet and udder. She also grazes year round in the most economical fashion. We feel a bull gleaned from this way of testing has more real producer value than any gain test could have. Just like BSE reminded us of how important controlling expenses is, we are once again reminded of this with today's absurd costs of fuel, fertilizer, feed, parts, and the list goes on. Being the most cost efficient with solid winter feeding strategies, good grazing practices and utilizing genetics to help fit into those kind of production practices are far more relevant to profitability than the past belief of bigger, better, faster. We believe our cattle are well aligned and most suited with today's cattlemen's needs; more so, than many of the alternatives available.

You will notice that we don't use an extended list of superlatives to build up our bulls. We prefer you make your own judgement and depiction of them. It's easy to throw fancy terms around but the meat is in the cows and cow families behind these guys. Giving insight to each bulls maternal make up and past production efforts we feel is more beneficial.

Since we don't chase performance extremes and our cows and heifers calve out on grass, many if not all these bulls can be considered for use on either cows or heifers. We don't perpetuate calving issues. We cull any females requiring assistance. This even goes for our first calving heifers. We put a lot of effort into maximizing consistency and predictability by resisting genetic variation through breeding the traits of most economic importance. Utilize our scoring system, videos, pictures and brief notes on the cows and cow families of the bulls. If you require added clarity, please don't hesitate to call, or visit with any questions you may have.

Respectfully,
Trevor, Cheryl, Brett, Carter Branvold

2022
MARCH 16,  17, 18
2 Year Old
BULL SALE
ONLINE

Videos and Pictures are available online.

Visit:

www.edjeauctions.com



or www.gbtangus.com



Ph: Trevor 306-577-9141, Cheryl 306-435-7785

Box 205

Wawota, SK.

S0G 5A0

Email: gbtangus@sasktel.net

Website: gbtangus.com

Do's and Don'ts - *What you can expect:*

- Fertile, Functional, Practical and Predictable Angus Genetics-
- High fertility. Our cows calve in 60 days or less. We don't have two calving seasons. Opens and dries are culled-no question.
- Guaranteed parentage. All bulls verified through DNA testing.
- All bulls selling are free of any known genetic defects.
- We don't trim hair or feet. We believe it's important to present our cattle without altering what they truly are.
- All bulls are tested free of Johnes disease.
- We don't push our bulls for extravagant gains. Their goodness is bred in, not fed on.
- Our bulls are developed for longevity. That's why we don't push them for unrealistic, impractical gains.
- No added expense of sales management, auctioneers, ring men, order buyers or other sales commissions.
- No silly sale orders. Bulls sell in the order of when they are born-yes, simplicity does exist.
- We use the very bulls we raise. If they aren't good enough for us, we don't expect you to buy them.
- We believe in our cattle. Every cow in our herd carries the GBT prefix and many also carry the prefix on the sire side. Unfortunately, this is an uncommon practice.
- No, our sale bulls don't weigh 1800lbs. We could feed them to that point but why waste the feed and hinder longevity and usefulness?
- Our cattle calve easily and calves nurse without assistance. No need for watchful cameras or barns. We calve on grass with less than 1% requiring assistance-this includes our first calf heifers. Anything requiring intervention is culled. We don't perpetuate problems.
- Yes, we challenge our cows. We run them in a similar fashion to our commercial counterparts.
- No, we don't "performance test" our bulls. A full feed bunk and giving every opportunity to flourish, isn't a test. We believe the true test is done through the mother cows-this is the real world proving grounds.
- We don't sort aside poor doers and feed them separately. We discard them.

ABOUT OUR SCORING SYSTEM:

We concentrate a lot of our efforts towards analyzing and discriminating our cattle. Utilize this information to your advantage. Be aware that we never want a customer disappointed in one of bulls or how they produce. We therefore score them critically.

Udders: Calving on grass is a whole new level of difficult with keeping udders sound. Unlike winter calving, the milk flow comes in hard and fast. With most of our customers calving on grass, we feel it's imperative to be extra diligent with selecting towards cows that have udders that resist early breakdown. We score our cows right at calving to ensure we grade them at full engorgement. This reveals imperfections that tend to be less visible only days later.

5/5 perfect udder and teat structure.

4/5 very ideal quality-future break down unlikely.

3/5 some attachment and or teat placement/size issues but still very functional.

2/5 poor, culling required.

1/5 very poor, nursing assistance required.

Calving Ease: We calve our heifers right along side our mature cow herd out on grass. We only check our herd twice daily, so we expect both our heifers and cows to calve and nurse unassisted. Any females requiring assistance in this regard are marked and culled. Being this ruthless has groomed a herd of cattle that are largely self sufficient.

5/5 very small (<60 lbs.) high degree of confidence to use in heifer breeding programs.

4/5 small (60-75 lbs.) may be used on heifers in low birth herds.

3/5 medium (75-85 lbs.) recommended for cows.

2/5 large (85-100 lbs.) cows only.

1/5 very large (>100 lbs.) castrated.

HEIFER BULLS OR COW BULLS:

When we determine whether a bull receives "heifer bull" status (5/5) or not isn't determined by performance or birth weight alone. We consider calf shape, the cows past track record and the individuals throughout the pedigree. Be aware of your own cow herd though. A herd with already low birth weights or low incidences of calving difficulties are often able to be freer in their selection compared to one that struggles with calving issues. In short, if it's abnormal to assist heifers in your program, don't hesitate to sample a CE:4/5 bull. Alternately, if past experiences prove birth weights and calving issues are an issue, err on the side of caution and stick with the 5/5 bulls on your heifer mating's.

TERMINOLOGY/ABBREVIATIONS:

CE: 5/5 being easiest calving potential. Lower the number equals potentially lower calving ease.

Disposition: 5/5 indicating quietest with lower score indicating less desirable disposition.

AOD: Age of dam in years at time of calving.

Udder: 5/5 indicates highest quality. Lower the number equals less desirable.

NO FREE LUNCH

Since the performance craze hit back in the 70's, our industry has in some form or fashion held onto this bigger, better, faster fascination. It's a fascination that still plagues many systems today. Increasing weaning weights means having to increase milk and growth production which in turn increases cow maintenance requirements. Remember...there is no free lunch.

GBT WINNER 1724

REF **A**

1724 05/27/2017 AAA reg#: 19368829 BULL

MH Titan 752
MH Winner 932
MH Mina 53

Sinclair X-Plus 1XX30
GBT Cassie 1331
GBT Cassie 010

O C C Great Plains 943G
MH Melisa 357
Lodge of Wye
M H Mina 836
Sinclair Emulation XXP
Sinclair K Bty 5S1 E013
Leachman Right Time
Biever's Cassie 51F



Our selection to replace his sire. 1724 hails from the prepotent Cassie tribe who has proliferated throughout our herd, making up the bulk of our female inventory. Lineage reads about as intriguing as any with intense EXT influence through OCC Great Plains, Emulation XXP, Right Time and the good old originating Cassie 51F. Lodge of Wye rounds out the tabulation.

GBT OPEN PLAINS 1809

REF **B**

1809 05/09/2018 AAA reg#: 19665078 BULL

Sinclair Patriarch 3B47
Sinclair Plains Boss 5B02
Sinclair Lady Ida 7V19 04F3

GBT Transition 1015
GBT Miss Morrison 1224
GBT Miss Morrison 753

Sinclair Boss
Sinclair Lady Ida 70C7 2V11
N Bar Emulation Ext A1747
Sinclair Lady Ida 04F3 B154
B B A R Legacy 624
Bailey's Mayflower 44'06
O C C Legacy 839L
B B A R Miss Morrison 118G



Another selection we utilized as a yearling to sample within our herd. 1809 offers a tick more mass than his sire does. 1809 was the highest scoring bull on foot design, of all his pen mates that year. We sold him through our 2020 sale to good customers, Dave and Elaine Weightman.

GBT CHAMPION 1827

REF **C**

1827 05/18/2018 AAA reg#: 19665080 BULL

Quintes of Wye UMF 10502
Chez of Wye UMF 10824
Clova of Wye UMF 8996

GBT Locomotive 1239
GBT Mayflower 1651
GBT Mayflower 1456

Cyrus of Wye
Queen Mother of Wye UMF 9141
Carter of Wye UMF 8138
Clova of Wye UMF 8176
B B A R Legacy 624
GBT Blossom 743
GBT Locomotive 1239
GBT Mayflower 012



We retained 1827 for ourselves and is serving as junior herd sire. He replaces his good sire, Chez. The maternal and efficiency goodness of his dam played a heavy role in his selection. She just does no wrong and cranks out the good ones every single year. Interesting note: dam is intensely line bred with an inbreeding coefficient of 26.56%. Full brother to 1827 is working in northern Alberta for Andrew and Vivian Miller. 1827 is co-owned with Running Rabbit Ranching.

GBT CHAMPION 1824

REF D

1824 05/16/2018 AAA reg#: 19665079 BULL

Quintes of Wye UMF 10502
Chez of Wye UMF 10824
Clova of Wye UMF 8996

GBT Locomotive 1478
GBT Jestress 1639
GBT Jestress 1333

Cyrus of Wye
Queen Mother of Wye UMF 9141
Carter of Wye UMF 8138
Clova of Wye UMF 8176
GBT Locomotive 1239
GBT Cassie 036
B B A R Legacy 624
GBT Jestress 772



It sure is gratifying to see these bulls we sample as yearlings turn out some good progeny for us! I think many will agree, this is a nice sire group. Very nice muscle dimension, do-ability and capacity-but that comes as no surprise, considering the Jestress cow family is backing up the pedigree. Maternal brother to 1824 sells as lot 2005! His mom, 1639 is one of my favorites. Would probably be a good idea to hold back one of these sons for ourselves. 1824 sold to Bluestone Stock Farms in our 2020 sale.

SINCLAIR PLAINS BOSS 5B02

REF E

5B02 02/15/2015 AAA reg#: 18152044 BULL

Sinclair Boss
Sinclair Patriarch 3B47
Sinclair Lady Ida 70C7 2V11

N Bar Emulation Ext A1747
Sinclair Lady Ida 7V19 04F3
Sinclair Lady Ida 04F3 B154

Sinclair Grass Master
Sinclair Lady 6P69 3M18
O C C Great Plains 943G
N Bar Lady Ida S C C 2V11
N Bar Emulation EXT
N Bar Clova Pride U3031
Emulation N Bar 5522
N Bar Lady Ida X2912



An impressive individual with the trademark Emulation extension and fluid movement. 5B02 is as royally bred as they come, tracing 45 times to the maternal phenom, Emulation 31. The benefits of linebreeding are many and consistency is one trait he shows great promise with. His progeny have a quick growth rate without excessive mature size and pack a genetic maternal punch. His daughters are showing excellent potential for attractive udder design and are weaning solid calves.

A Note *about Linebreeding:*

Ever wonder why full siblings from the same mating's often don't look similar to each other and are unpredictable in their performance? This is the direct result of outcrossing. It is similar to the analogy of breeding using a shotgun approach vs a rifle. One is scattered and unpredictable (outcrossing) while the other, is precise and determined (linebreeding).

Linebreeding is one of the oldest tools in livestock breeding yet is one of the least utilized and understood. Linebreeding is a way of identifying genetic attributes, good and bad. Unlike the myth that it causes abnormalities, it's quite the opposite. Close breeding actually only reveals what is already there in a set of genetics by compounding those genes. Any issues within those genes (genetic defects) get flushed out. We can then remove those problem cattle and carry on with the "clean" or most desirable genetics. The other benefit of close breeding is the consistency and predictability that comes along with the practice. If a breeder is diligent, traits such as calving ease, maternal, disposition, longevity, structure, growth, and carcass traits get cemented. Real value is in cattle that look, grow, and perform alike. As you will notice, most of our cattle carry some degree of close breeding. Utilize these genetics to reduce variation in your calf crop. Whether you're selling a pen of steers or marketing or retaining breeding females, consistency and uniformity pays!

GBT WEATHERPROOF 2002 LOT 2002

2002 05/05/2020 AAA reg#: 20185032 BULL

MH Winner 932
 GBT Winner 1724
 GBT Cassie 1331

 GBT Locomotive 1239
 GBT Mayflower 1651
 GBT Mayflower 1456

MH Titan 752
 MH Mina 53
 Sinclair X-Plus 1XX30
 GBT Cassie 010
 B B A R Legacy 624
 GBT Blossom 743
 GBT Locomotive 1239
 GBT Mayflower 012

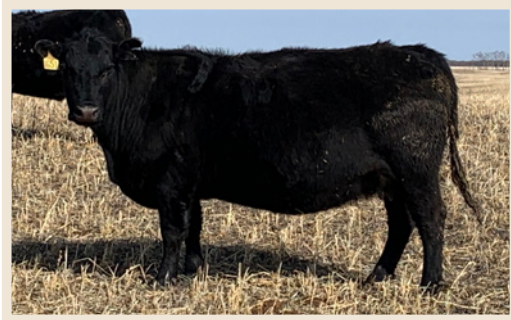


AOD: 5 CE: ★★★★★★ DISP: ★★★★★★ UDDER: ★★★★★☆

A real genetic piece to start off the sale. An own son of our resident herd sire; GBT Winner 1724 who was selected as the replacement for his sire. 2002's dam has an impeccable calving interval and is a herd bull producer, responsible for raising GBT Champion 1827 who incidentally is reference sire to this year's sale lots: 2016,2017,2032,2036 and 2038. She also raised one of last years sale highlights; GBT Carbon 1945, selling to Keystone Ranch in northern Alberta. And yet another outstanding son is slated for the 2023 sale. In our eyes, his dam is a very ideal brood matron. She's moderate framed, very correct on her feet and legs, sports a sound udder and possesses all those must have functional traits so vital to profitable ranching. Cherry on top is her paperwork. She is a result of father/daughter mating by GBT Locomotive 1239 (26.56% inbreeding coefficient). Ensuring true genetic soundness and purity!



1827 - Maternal Brother to 2002



GBT Mayflower 1651 - Dam of 2002



1945 - Maternal Brother to 2002

GBT OPEN PLAINS 2004 LOT 2004

2004 05/08/2020 AAA reg#: 20185038 BULL

Sinclair Plains Boss 5B02
 GBT Open Plains 1809
 GBT Miss Morrison 1224

 B B A R Legacy 624
 GBT Tilda 1351
 Willabar Tilda 106S

Sinclair Patriarch 3B47
 Sinclair Lady Ida 7V19 04F3
 GBT Transition 1015
 GBT Miss Morrison 753
 O C C Legacy 839L
 B B A R Ruby Majorette 124'96
 Willabar Windy 107N
 Willabar Tilda 64P



AOD: 8 CE: ★★★★★★ DISP: ★★★★★★ UDDER: ★★★★★☆

2004 represents another sire group by a herd bull who sold through this very sale. He was a top selection to use back in our herd to help intensify the Plains Boss 5B02 influence. The Plains Boss daughters are proving out to be some real top notch females. They are ultra feminine, have super udders and show early signs of strong fertility. These Open Plains progeny are similar to the 5B02 cattle but posses maybe a tick more mass. Longevity built in here as 2004's maternal grand dam (106S) produced for us until the age of 15 and still had a near perfect foot and udder!



106S -Maternal Grandam of 2004



1870 -Maternal Sister to 2004

GBT WEATHERPROOF 2005

LOT 2005

2005 05/11/2020 AAA reg#: 20185039 BULL

MH Winner 932	MH Titan 752
GBT Winner 1724	MH Mina 53
GBT Cassie 1331	Sinclair X-Plus 1XX30
	GBT Cassie 010
GBT Locomotive 1478	GBT Locomotive 1239
GBT Jestress 1639	GBT Cassie 036
GBT Jestress 1333	B B A R Legacy 624
	GBT Jestress 772

AOD: 5 CE: ★★★★★☆ DISP: ★★★★★☆ UDDER: ★★★★★☆

Another strong Winner son who is backed by a beautiful Locomotive 1478 daughter. Locomotive 1478 is a bull we raised and sampled as a yearling before selling him in our 2016 sale to 20/20 Ranching. He left quite a mark with some of our most cherished females in the herd today. Right sized, easy fleshing with a real pleasant look and quality udders. Take note-2005 is a maternal brother to GBT Champion 1824, reference sire to this years lots: 2057,2061,2082.



1478 - Maternal Grand sire of 2005



GBT Jestress 1639
- Dam of 2005



1824 - Maternal Brother to 2005

GBT CHEZ 2009

LOT 2009

2009 05/11/2020 AAA reg#: 20193990 BULL

Quintes of Wye UMF 10502	Cyrus of Wye
Chez of Wye UMF 10824	Queen Mother of Wye UMF 9141
Clova of Wye UMF 8996	Carter of Wye UMF 8138
	Clova of Wye UMF 8176
GBT X-Plus 1549	Sinclair X-Plus 1XX30
GBT Ruby Belle 1842	GBT Ruby Belle 1279
GBT Ruby Belle 1279	GBT Rolex 002
	GBT Ruby Belle 088

AOD: 3 CE: ★★★★★☆ DISP: ★★★★★☆ UDDER: ★★★★★☆

Our only direct son of Chez for this year's sale. Chez was our selection from the storied WYE herd out of Queenstown, MD. Unfortunately, we lost him to a breeding injury in 2019. Luckily, we have a good sampling of his daughters in production and are utilizing sons to carry on his qualities. If you follow EPD's, 2009 is in the top 1% of the entire breed for \$energy value. A value that is intended to reflect the energy expended for maintenance. This can be directly contributed to his unique maternal lineage that includes two shots of our iconic Ruby Belle 1279 cow. She is the definition of fleshing ease. In these times of high feed prices, drought and ever increasing input costs, it is a trait that needs serious consideration.



10824
- Sire of 2009



1549
- Maternal Grand sire of 2009



1842
- Dam of 2009

GBT PLAINS BOSS 2012

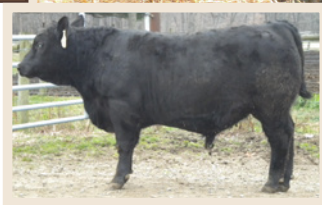
LOT 2012

2012 05/12/2020 AAA reg#: 20207383 BULL

Sinclair Patriarch 3B47
Sinclair Plains Boss 5B02
Sinclair Lady Ida 7V19 04F3

Chez of Wye UMF 10824
GBT Rosebud 1813
GBT Rosebud 1113

Sinclair Boss
Sinclair Lady Ida 70C7 2V11
N Bar Emulation Ext A1747
Sinclair Lady Ida 04F3 B154
Quintes of Wye UMF 10502
Clova of Wye UMF 8996
B B A R Legacy 624
GBT Rosebud 804



10824
- Maternal grandsire of 2012

AOD: 3 CE: ★★★★★☆ DISP: ★★★★★☆ UDDER: ★★★★★☆

A direct Plains Boss 5B02 son and a neat one to lead off the sire group this year. This stud has always caught our eye. He is extra expressive in his muscle shape with a real nice hip. His mom is a good young cow who has weaned two nice calves (both in the first week of the calving season) and is safe for a 2022 calving. No small feat considering we demand more from our cowherd than most seedstock operations. Gather up these Plains Boss descendants. They will build some incredible females for you.

GBT WEATHERPROOF 2014 LOT 2014

2014 05/15/2020 AAA reg#: 20207391 BULL

MH Winner 932
GBT Winner 1724
GBT Cassie 1331

Calum of Wye UMF 10453
GBT Lady Fanny 1591
GBT Lady Fanny 1309

MH Titan 752
MH Mina 53
Sinclair X-Plus 1XX30
GBT Cassie 010
Forester of Wye UMF 9604
Clova of Wye UMF 8996
B B A R Legacy 624
B B A R Lady Fanny 6822



1591
- Dam of 2014

AOD: 6 CE: ★★★★★☆ DISP: ★★★★★☆ UDDER: ★★★★★☆

A Winner son with udder improver cow families in Cassie and Lady Fanny. 2014's dam is a head turner as was her dam, double bred Legacy grand dam and great grand dam. We are looking forward to getting some Winner daughters into production for 2022. Two maternal sisters to 2014 retained and one brother sold in 2021. Bull has a small spot on eye from old pink eye scar.



GBT PLAINS BOSS 2015

LOT 2015

2015 05/15/2020 AAA reg#: 20185047 BULL

Sinclair Patriarch 3B47
Sinclair Plains Boss 5B02
Sinclair Lady Ida 7V19 04F3

Sinclair Plains Boss 5B02
GBT Miss Morrison 1869
GBT Miss Morrison 1436

Sinclair Boss
Sinclair Lady Ida 70C7 2V11
N Bar Emulation Ext A1747
Sinclair Lady Ida 04F3 B154
Sinclair Patriarch 3B47
Sinclair Lady Ida 7V19 04F3
Sinclair X-Plus 1XX30
GBT Miss Morrison 753



5B02
- Sire of 2015

AOD: 3 CE: ★★★★★☆ DISP: ★★★★★★ UDDER: ★★★★★☆

Intriguing pedigree here with this good bull being double bred Plains Boss 5B02. Pretty rare to find genetics this unique. Take advantage of the predictability this bull will produce as he traces 90 – yes, 90 times to the maternal phenom, Emulation 31! Again, a good young momma who is proving to be fertile and functional, keeping up with the mature cows in the herd. She has calved first cycle on her first two attempts and is safe in calf for 2022. Take note: 2015's grand dam is a maternal sister to GBT Open Plains 1809, sire to many bulls in this sale.



Emulation 31

GBT CHAMPION 2016

LOT 2016

2016 05/15/2020 AAA reg#: 20185048 BULL

Chez of Wye UMF 10824
GBT Champion 1827
GBT Mayflower 1651

B B A R Legacy 624
GBT Cleo 1370
GBT Cleo 0101

Quintes of Wye UMF 10502
Clova of Wye UMF 8996
GBT Locomotive 1239
GBT Mayflower 1456
O C C Legacy 839L
B B A R Ruby Majorette 124'96
Sinclair Time Out 8P1
GBT Cleo 871



AOD: 8 CE: ★★★★★☆ DISP: ★★★★★★ UDDER: ★★★★★☆

Now here is a bull to mark up on your page. Getting as many great cows as possible into a pedigree is vital to quality genetic progress. The paternal side has Mayflower 1651 while maternally, Cleo 1370 rounds out the bottom side. 2016's dam is one mighty productive cow. One you can bet the ranch, will not disappoint. A true 1200 pound cow (if she's lucky) and brings in a stud of a calf every year. Add to this, she has calved first cycle every year except one, where she calved second cycle. These credentials don't come easy around here, considering we challenge these girls to grind out a living. Feet, legs, and udder? Yes, she is sound as a dollar that way too. I can say without hesitation, this genetic package would benefit commercial or registered outfits alike. Sons have sold in past sales to Triple V, Nathan and Sarah Picton, Tom and Cheryl McDonald, Tyler Fewings.



1370 - Dam of 2016



1601 - Maternal Brother to 2016



1711 - Maternal Brother to 2016



1876 - Maternal Brother to 2016



1918 - Brother to 2016

GBT CHAMPION 2017

LOT 2017

2017 05/17/2020 AAA reg#: 20185049 BULL

Chez of Wye UMF 10824
GBT Champion 1827
GBT Mayflower 1651

Sinclair Plains Boss 5B02
GBT Jestress 1759
GBT Jestress 1359

Quintes of Wye UMF 10502
Clova of Wye UMF 8996
GBT Locomotive 1239
GBT Mayflower 1456
Sinclair Patriarch 3B47
Sinclair Lady Ida 7V19 04F3
Bad Lands Forte 5S
GBT Jes GBT Jestress 927



AOD: 4 CE: ★★★★★☆ DISP: ★★★★★★ UDDER: ★★★★★☆

2017 has been a highlight all summer. Added eye appeal and body mass that will create some good soggy steers and broody replacement females. 2017's mom is a good, solid Plains Boss 5B02 daughter which is proving to be a valuable feature. Premium udder, calves first cycle and has already put two daughters back into the herd so far. Three quarter brother to lots 2032 and 2038.

GBT OPEN PLAINS 2019

LOT 2019

2019 05/17/2020 BIR 626097969 BULL

Sinclair Plains Boss 5B02
GBT Open Plains 1809
GBT Miss Morrison 1224

Sinclair Patriarch 3B47
Sinclair Lady Ida 7V19 04F3
GBT Transition 1015
GBT Miss Morrison 753



19200 - Maternal Brother to 2019

200 - Purebred Unregistered Cow

AOD: 6 CE: ★★★★★☆ DISP: ★★★★★★ UDDER: ★★★★★☆

Purebred, unregistered bull. Sells without papers.

Good Open Plains son out of a solid Calum daughter. Fairly apparent these Open Plains bulls will sire the right kind of steers. One maternal sister retained in herd.



GBT OPEN PLAINS 2022

LOT 2022

2022 05/18/2020 AAA reg#: 20185049 BULL

Sinclair Plains Boss 5B02
 GBT Open Plains 1886
 GBT Cleo 1374

Chef of Wye UMF 10824
 GBT Cleo 1808
 GBT Cleo 1550

Sinclair Patriarch 3B47
 Sinclair Lady Ida 7V19 04F3
 B B A R Legacy 624
 KBJ Cleo 621R
 Quintes of Wye UMF 10502
 Clova of Wye UMF 8996
 Calum of Wye UMF 10453
 GBT Cleo 1374



AOD: 3 CE: ★★★★★☆ DISP: ★★★★★☆ UDDER: ★★★★★☆

A heifers first attempt at motherhood and a bang up job she did with this guy. The Cleo tribe grace the pedigree both top and bottom of this guy. We have lots of Cleo females populating our inventory and with good reason. Good feet and udders are typically the trademark. Also worth mention is the WYE donor dam; Clova of WYE UMF 8996 also appears twice through our herd sires, Calum and Chez. 2022 is top third of the entire Angus breed for low birth.



1886
-Sire of 2022

GBT PLAINS BOSS 2025

LOT 2025

2025 05/20/2020 BIR 626077694 BULL

Sinclair Patriarch 3B47
 Sinclair Plains Boss 5B02
 Sinclair Lady Ida 7V19 04F3

Sinclair Boss
 Sinclair Lady Ida 70C7 2V11
 N Bar Emulation Ext A1747
 Sinclair Lady Ida 04F3 B154



1863 - Waiting on DNA Results

AOD: 3 CE: ★★★★★☆ DISP: ★★★★★☆ UDDER: ★★★★★☆

A flashy, direct son of 5B02 and is a heifers first calf. Impressively, she has calved first cycle both times and is safe in calf again for 2022. Also note her near perfect udder score. This guy and with his moms' credentials, impressed us enough to sample on our cows last year as a yearling. Many positives to this young herd sires resume.



GBT PLAINS BOSS 2026

LOT 2026

2026 05/19/2020 AAA reg#: 20185059 BULL

Sinclair Patriarch 3B47
Sinclair Plains Boss 5B02
Sinclair Lady Ida 7V19 04F3

GBT X-Plus 1549
GBT Blossom 1848
GBT Blossom 1368

Sinclair Boss
Sinclair Lady Ida 70C7 2V11
N Bar Emulation Ext A1747
Sinclair Lady Ida 04F3 B154
Sinclair X-Plus 1XX30
GBT Ruby Belle 1279
Sinclair X-Plus 1XX30
GBT Blossom 1127



AOD: 3 CE: ★★★★★☆ DISP: ★★★★★☆ UDDER: ★★★★★☆

This is the first proof from our X-Plus 1549 daughters. They are really nice looking, very moderate framed females that sport udder quality and were the butterballs of the bred heifers. Going forward, this cross of Plains Boss 5B02 and X-Plus 1549 may be the ticket. Very complimentary to each other and we expect the brilliant udder quality will get cemented. Impressive calf out of a first calf heifer who's also a member of the first cycle calving club. Settled for another calf in 2022. Comments at calving were: "nice heifer, 5/5 teat and udder quality".



1368
-Maternal Grandam
of 2026



1549
- Maternal Grand sire
of 2026

GBT OPEN PLAINS 2030

LOT 2030

2030 05/22/2020 AAA reg#: 20185062 BULL

Sinclair Plains Boss 5B02
GBT Open Plains 1809
GBT Miss Morrison 1224

Locke of Wye UMF 10398
GBT Cleo 1515
GBT Cleo 1323

Sinclair Patriarch 3B47
Sinclair Lady Ida 7V19 04F3
GBT Transition 1015
GBT Miss Morrison 753
Churchill of Wye
Lottie of Wye UMF 9941
B B A R Legacy 624
GBT Cleo 904



AOD: 6 CE: ★★★★★☆ DISP: ★★★★★☆ UDDER: ★★★★★☆

Again, the good Cleo family showing up on this bull's papers. His dam is a tank of a cow with an exceptional foot. She has produced one bull who sold to Running Rabbit Ranch of Alberta and has two daughters retained in herd. Dam has calved first cycle every year. In an industry where fertility and longevity rule profitability, we believe this trait is well worth noting.



1515
-Dam of 2030



1753
-Maternal Brother

GBT CHAMPION 2032

LOT 2032

2032 05/23/2020 AAA reg#: 20185064 BULL

Chez of Wye UMF 10824
GBT Champion 1827
GBT Mayflower 1651

Sinclair Plains Boss 5B02
GBT Cassie 1718
GBT Cassie 1288

Quintes of Wye UMF 10502
Clova of Wye UMF 8996
GBT Locomotive 1239
GBT Mayflower 1456
Sinclair Patriarch 3B47
Sinclair Lady Ida 7V19 04F3
O C C Legacy 839L
Bievers Cassie 51F

AOD: 4 CE: ★★★★★★ DISP: ★★★★★★ UDDER: ★★★★★★

Three quarter brother to lots 2017 and 2038. These three brothers are solid herd sire prospects. Again, very good cow families represented in this bull's pedigree. We always like to see progeny proof from a new sire before getting too excited about using him very hard. What we see from Champion 1827, it's looking like he will get a bigger role for this summers breeding plans. These Cassie cows almost always ring the bell for high quality udders.



1718
- Dam of 2032



Original Cassie
- Great Grandam of 2032

GBT CHAMPION 2036

LOT 2036

2036 05/23/2020 AAA reg#: 20185067 BULL

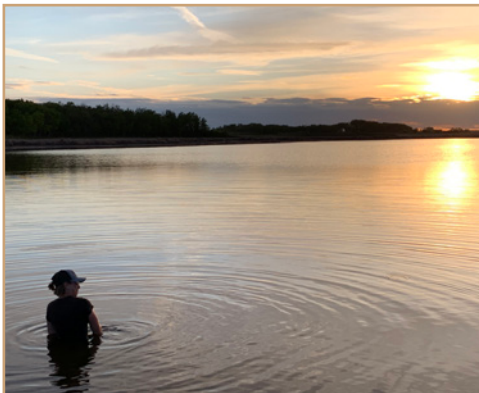
Chez of Wye UMF 10824
GBT Champion 1827
GBT Mayflower 1651

MH Winner 932
GBT Cassie 1784
GBT Cassie 1325

Quintes of Wye UMF 10502
Clova of Wye UMF 8996
GBT Locomotive 1239
GBT Mayflower 1456
MH Titan 752
MH Mina 53
B B A R Legacy 624
GBT Cassie 723

AOD: 4 CE: ★★★★★★ DISP: ★★★★★★ UDDER: ★★★★★★

The only Champion x Winner combination in the sale. Dam is a paternal sister to our herd sire, GBT Winner 1724. These Winner daughters are slighter made, very moderate framed females with very good udders. This guy's dam has a 4.5/5 udder score.



GBT CHAMPION 2038

LOT 2038

2038 05/25/2020 AAA reg#: 20185068 BULL

Chez of Wye UMF 10824
 GBT Champion 1827
 GBT Mayflower 1651
 Sinclair Plains Boss 5802
 GBT Princess 1741
 Prairielane 2029 Band 6115

Quintes of Wye UMF 10502
 Clova of Wye UMF 8996
 GBT Locomotive 1239
 GBT Mayflower 1456
 Sinclair Patriarch 3847
 Sinclair Lady Ida 7V19 04F3
 Prairielane Ideal 0051-2029
 Prairielane 9012 Band 3127

AOD: 4 CE: ★★★★★ DISP: ★★★★★ UDDER: ★★★★★

Both dam and grand dam are admiral Angus females. Broody and moderate with nice snug udders and well placed teats. Dam has calved inside the first 30 days of each calving season. Three quarter brother to lots 2017 and 2032. Consider this bull more for cows as he does have some heavier birth weight genetics through his grand dam.



6115
 - Maternal Grandam of 2038

GBT ELEVATE 2042

LOT 2042

2042 05/27/2020 AAA reg#: 20185072 BULL

GBT X-Plus 1549
 GBT Elevate 1888
 GBT Jestress 1307
 Geis Chief 106'05
 GBT M'Brook Lass 784
 Spring View M'Brook Lass 1M

Sinclair X-Plus 1XX30
 GBT Ruby Belle 1279
 B B A R Legacy 624
 GBT Jestress 841
 Crescent Creek Chief 70J
 Geis Ruby 185'96
 Glennie Blackman 5F
 Glennie M'Brook Lass 30J

AOD: 14 CE: ★★★★★ DISP: ★★★★★ UDDER: ★★★★★

The only Elevate 1888 son in the sale. Every year we sample a group of yearling bulls selected straight out of our bull pen. This guy's sire was one of them. Our selection for these potential herd sires weighs heavily on the cows behind them. The Jestress cow family from this guy's sire and 2042's dam are cows that have extended longevity. Some of our longest lived cows are from the Jestress and Lass tribe. Pretty darn nice disposition on this guy as well but that's no surprise with X-Plus 1549 in the tabulation. Consider this bull more for use on cows since his mom carries a bit more birth weight genetics.



1929 - Maternal Brother to 2042



188
 - Sire of 2042



1431 - Maternal Sister to 2042

GBT PLAINS BOSS 2047

LOT 2047

2047 05/30/2020 AAA reg#: 20185074 BULL

Sinclair Patriarch 3B47
Sinclair Plains Boss 5B02
Sinclair Lady Ida 7V19 04F3

B B A R Legacy 624
GBT Jestress 1307
GBT Jestress 841

Sinclair Boss
Sinclair Lady Ida 70C7 2V11
N Bar Emulation Ext A1747
Sinclair Lady Ida 04F3 B154
O C C Legacy 839L
B B A R Ruby Majorette 124'96
GBT 322 Nugget 624S
Aitken Acres Jestress 11P

AOD: 8 CE: ★★★★★★ DISP: ★★★★★★ UDDER: ★★★★★★

Dam of 2047 is the dam of GBT Elevate 1888 (sire of lot 2042). Many sons have sold in previous sales. In our opinion, its good business to put extra check marks beside these bulls out of older cows. We never give second chances to opens or poor mothers. Every cow must also calve and wean a calf without incidence or human intervention. Bad bags and feet are strictly monitored and removed. Needless to say, a cow that makes it as far as 2047's dam, is around for all the right reasons.



841 - Maternal Granddam of 2047



1307
- Dam of 2047



1888 - Maternal Brother to 2047

Watch for updated DNA and pedigree results at
www.edjeauctions.com
and **www.gbtangus.com**



GBT REVERE 2054

LOT 2054

2054 05/31/2020 AAA reg#: 20207587 BULL

KBJ Rogue II 203H	G D A R Rogue 640
Bad Lands Rogue 16Y	KBJ Queen 69X
Bad Lands Erica 10K	C H Quantum 3330
	Bad Lands Erica 532E
Sinclair Plains Boss 5B02	Sinclair Patriarch 3B47
GBT Cassie 1747	Sinclair Lady Ida 7V19 04F3
GBT Cassie 1426	GBT Locomotive 1239
	GBT Cassie 723

AOD: 4 CE: ★★★★★☆ DISP: ★★★★★☆ UDDER: ★★★★★☆

We selected and used 2054 this past summer for his appeal and quality cows in his pedigree. 2054's sire, Bad Lands Rogue 16Y was a bull we were able to secure from our good friend, Jack Bunny. Getting up in age, Rogue was still very athletic and possessed great foot structure. With the maternal potency of both 5B02 and Rogue, use this herd sire with confidence to build a solid female base. Dam is another premium 5B02 daughter who has calved first cycle every year and holds a near perfect udder score. Add to this, his Locomotive grand dam has an equally impressive production record and is a serious looker as well. Quality bred deep!



51F
- Original Cassie



1747 - Dam of 2054



1426 - Maternal Granddam of 2054

GBT CHAMPION 2057

LOT 2057

2057 06/01/2020 AAA reg#: 20185077 BULL

Chez of Wye UMF 10824	Quintes of Wye UMF 10502
GBT Champion 1824	Clova of Wye UMF 8996
GBT Jestress 1639	GBT Locomotive 1478
	GBT Jestress 1333
GBT X-Plus 1549	Sinclair X-Plus 1XX30
GBT Tilda 1870	GBT Ruby Belle 1279
GBT Tilda 1351	B B A R Legacy 624
	Willabar Tilda 1065

AOD: 3 CE: ★★★★★☆ DISP: ★★★★★☆ UDDER: ★★★★★☆

Good candidate for those looking to help increase efficiencies in their cow herd. Moderate framed bull here out of a pretty little momma with an absolutely perfect udder. Grand dam of 2057 produced until 16 years of age and in the process, left some good daughters in our herd to carry on with. Same cow family as the good lot 2004 bull. Lots of efficiency and longevity values bred into this potential herd sire. Half brothers sell as lot 2061, 2078 and 2082.



1824 - Sire of 2057



1870 - Dam of 2057

GBT OPEN PLAINS 2059

LOT 2059

2059 06/03/2020 AAA reg#: 20185081 BULL

Sinclair Plains Boss 5B02
 GBT Open Plains 1809
 GBT Miss Morrison 1224
 Sinclair Plains Boss 5B02
 GBT Cassie 1732
 GBT Cassie 1573

Sinclair Patriarch 3B47
 Sinclair Lady Ida 7V19 04F3
 GBT Transition 1015
 GBT Miss Morrison 753
 Sinclair Patriarch 3B47
 Sinclair Lady Ida 7V19 04F3
 GBT Locomotive 1354
 GBT Cassie 723



AOD: 4 CE: ★★★★★☆ DISP: ★★★★★☆ UDDER: ★★★★★★

Another double bred Plains Boss 5B02 son. The doubling up of 5B02 in a pedigree results in having the Angus breeds maternal phenom, Emulation 31 grace the genetic tabulation 90 times! Linebreeding is the litmus test of determining genetic purity and reduces variation in a population. Utilize these genetics to increase consistency of your calf crop. These Plains Boss 5B02 daughters are peas in a pod. They carry tremendous volume from being so long bodied and they pass this onto their progeny.



Emulation 31 -intensely utilized bull showing up 90 times in 2059's pedigree



5B02 -double grandsire of 2059

51F
 - Original Cassie



GBT CHAMPION 2061

LOT 2061

2061 06/03/2020 AAA reg#: 20185083 BULL

Chez of Wye UMF 10824
 GBT Champion 1824
 GBT Jestress 1639

Sinclair Plains Boss 5B02
 GBT Ruby Belle 1822
 GBT Ruby Belle 1376

Quintes of Wye UMF 10502
 Clova of Wye UMF 8996
 GBT Locomotive 1478
 GBT Jestress 1333
 Sinclair Patriarch 3B47
 Sinclair Lady Ida 7V19 04F3
 Sinclair Grass Master
 B B A R Ruby Belle 1134



AOD: 3 CE: ★★★★★☆ DISP: ★★★★★☆ UDDER: ★★★★★★

2057, 2061, 2078 and 2082 are half brothers, all sired by Champion 1824. A bull we used as a yearling then sold to Bluestone Stock Farms in our 2020 sale. We preach about good cows and cow families in a pedigree. Whether your retaining females or just looking for consistency in your calf crop, it has big influence in the progeny born.

1824
 - Sire of 2061



GBT CHAMPION 2063

LOT 2063

2063 06/07/2020 BIR 626077731 BULL

Chez of Wye UMF 10824
 GBT Champion 1824
 GBT Jestress 1639

Quintes of Wye UMF 10502
 Clova of Wye UMF 8996
 GBT Locomotive 1478
 GBT Jestress 1333

GBT Lass 1677 - Purebred Unregistered Cow

AOD: 5 CE: ★★★★★☆ DISP: ★★★★★☆ UDDER: ★★★★★☆

Purebred, unregistered bull. Sells without papers.

This guy's dam is one nice young cow that seems to flesh easily. Moderate framed bull with a nice pattern and eye appeal. Longevity in both the Lass and Jestress families.



GBT PLAINS BOSS 2066

LOT 2066

2066 06/07/2020 AAA reg#: 20185089 BULL

Sinclair Patriarch 3B47
 Sinclair Plains Boss 5B02
 Sinclair Lady Ida 7V19 04F3

Sinclair Boss
 Sinclair Lady Ida 70C7 2V11
 N Bar Emulation Ext A1747
 Sinclair Lady Ida 04F3 B154
 GBT Locomotive 1239
 GBT Cassie 036
 Sinclair Time Out 8P1
 GBT Lady Fanny 1108

GBT Locomotive 1478
 GBT Lady Fanny 1631
 GBT Lady Fanny 1464

AOD: 5 CE: ★★★★★☆ DISP: ★★★★★☆ UDDER: ★★★★★☆

Maternal brother sold last year to Steven and Katie Cowan. Dam is a moderate framed, sweet made Locomotive 1478 daughter. Locomotive is a bull we wish we could have back. His classy made daughters are the right kind. 2066 is more moderate framed than most Plains Boss sons and this can be attributed to his good mom's lineage. Potential cow maker here.



1631
 - Dam of 2066



1478 - Maternal Grand sire of 2066



1941 - Maternal Brother to 2066

GBT CHAMPION 2078

LOT 2078

2078 06/16/2020 AAA reg#: 20207653 BULL

Chez of Wye UMF 10824
 GBT Champion 1824
 GBT Jestress 1639
 B B A R Legacy 624
 GBT Cleo 1374
 KBJ Cleo 621R

Quintes of Wye UMF 10502
 Clova of Wye UMF 8996
 GBT Locomotive 1478
 GBT Jestress 1333
 O C C Legacy 839L
 B B A R Ruby Majorette124'96
 KBJ Rogue 554N
 TLA Cleo 8H



1886
 - Maternal Brother to 2078

AOD: 8 CE: ★★★★★★ DISP: ★★★★★★ UDDER: ★★★★★☆

Half brother to lots 2057, 2061 and 2082 by Champion 1824. If you need several closely related sires for adding consistency to your calf crop, these brothers would be a good fit. 2078's mom has given us a couple replacements for our herd with a son selling in 2020 to Dave Weightman. Solid feet and udders on these Cleo cows.

GBT CHAMPION 2082

LOT 2082

2082 06/18/2020 AAA reg#: 20185110 BULL

Chez of Wye UMF 10824
 GBT Champion 1824
 GBT Jestress 1639
 Sinclair X-Plus 1XX30
 GBT Jestress 1406
 GBT Jestress 067

Quintes of Wye UMF 10502
 Clova of Wye UMF 8996
 GBT Locomotive 1478
 GBT Jestress 1333
 Sinclair Emulation XXP
 Sinclair K Bty 5S1 E013
 B B A R Legacy 624
 GBT Jestress 772



1067 - Maternal Granddam of 2082

AOD: 7 CE: ★★★★★★ DISP: ★★★★★★ UDDER: ★★★★★☆

Pretty nice bull with a pretty neat pedigree. Double bred to both Legacy and the good Jestress cow family. Make serious considerations on this guy. His dam and grand dam have been front runners in our herd, giving us good salable bulls and top end females every year. 2057, 2061 and 2082 are all half brothers sired by Champion 1824. A bull we utilized as a yearling before selling to Bluestone Stock Farms in our 2020 sale. Maternal brother was one of the highlights in our 2019 sale to Glen and Dawn Ekert.



1406
 - Dam of 2082



Sinclair X-Plus 1XX30 - Influetail Sire of 2022, 2009, 2014, 2026, 2042, 2057, 2082



1754 - Maternal Brother to 2082

GBT REVERE 2088

LOT 2088

2088 06/30/2020 AAA reg#: 20207182 BULL

KBJ Rogue II 203H
Bad Lands Rogue 16Y
Bad Lands Erica 10K

B B A R Legacy 624
GBT Jestress 067
GBT Jestress 772

G D A R Rogue 640
KBJ Queen 69X
C H Quantum 3330
Bad Lands Erica 532E
O C C Legacy 839L
B B A R Ruby Majorette 124'96
B B A R Nugget 322
Aitken Acres Jestress 11P



AOD: 11 CE: ★★★★★☆ DISP: ★★★★★☆ UDDER: ★★★★★☆

Dam is the grand dam to the good 2082 bull. This is the last progeny from the solid 1067 cow. She was one heck of a producer before retiring at 12 years of age. She calved first cycle every year with the exception of this last calf. Brothers sold in past sales to Flying Lazy R, Burnett Angus, James Clay, Eric Lamontagne and Remount Grazing. She was a producer of herd bulls as she only ever gave us one daughter and that so happens to be the dam of the 2082 bull in this year's sale.



1067
- Maternal Graddam of 2088



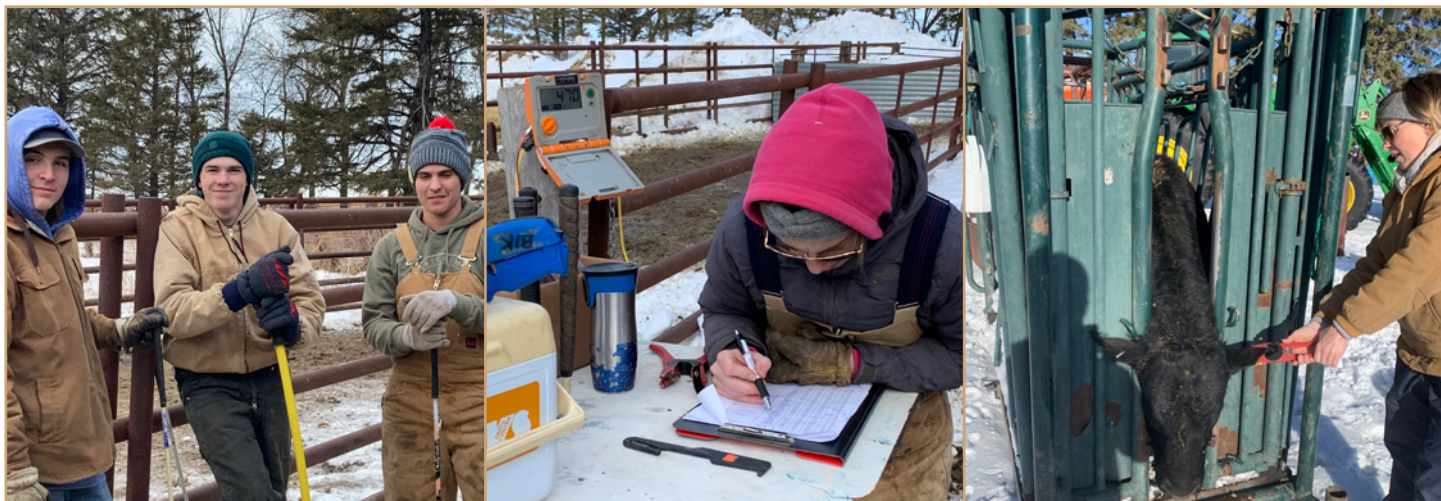
1906 - Maternal Brother to 2088

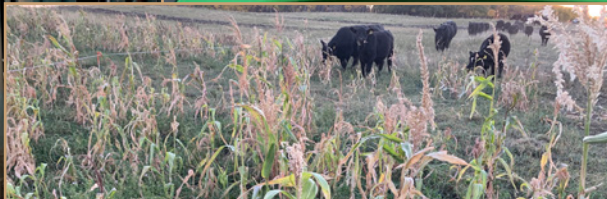
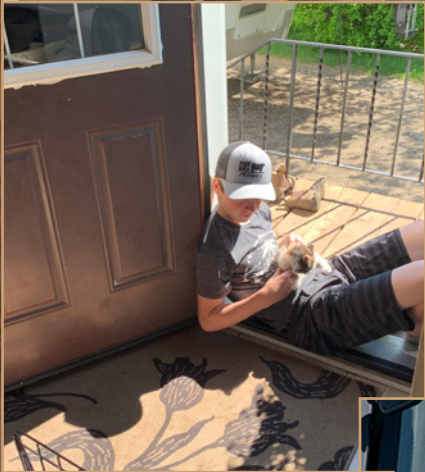


1709 - Maternal Brother to 2088



1406





SHARING INFORMATION:

In this fast-paced world of change, it's often a daunting task to find time to keep up. We'd like to invite you to join us on our website or through social media (we currently utilize Facebook, Twitter, Instagram, WhatsApp and Facebook Messenger) or just a good old email, text, or phone call still works too! We've found these platforms invaluable for sharing information, discussing possibilities, and getting quality answers to questions. We've been fortunate to be included in chat groups with other like-minded producers who share industry leading management techniques from summer and winter grazing methods, cattle selection, cover cropping, seeding, harvesting methods and on.

FERTILITY:

These bulls represent a base of mother cows diligently selected for fertility and who are adapted to a lower input environment. Cows unable to keep pace are not shuffled to a secondary calving season or otherwise given a second chance. This has enabled the cows to be naturally sorted for the optimal amount of milk and growth that our system will tolerate.



BIDDING/ONLINE VIEWING:

If you are new to the online bidding process, familiarize yourself early by going to www.edjeauctions.com. Here, you will find our sale bull listing with pictures, videos, pedigree links and brief notes of each bull on offer. If you require help getting set up to bid, please contact EDJE or ourselves.

TERMS/DELIVERY/BOARDING/INSURANCE/LIABILITY/HERD HEALTH:

Terms: Terms for the sale are cash, cheque or e-transfer to be paid upon receipt of invoice following sale. Funds are in Canadian dollars. U.S funds will be accepted at current rate of exchange.

Delivery: Free delivery is offered within 400 km radius of GBT Angus on any purchases of cattle. Any additional mileage will be charged at \$1/km. As things tend get busy during May, we prefer to complete deliveries prior to May.1st. Please discuss delivery arrangements with us.

Boarding: GBT will keep your purchase free of charge until April 1,2021. Any required time thereafter, a charge of \$3/day/animal will be charged. We strongly encourage bulls being left at GBT Angus to be insured as we will not be responsible for death or injury. Please discuss your boarding requirements with us.

Insurance: We strongly encourage you to place insurance on your purchases immediately after the sale as we are not responsible for any death or injury whatsoever.

Liability: GBT Angus; Trevor, Cheryl, Brett, Carter Branvold or any other person involved with them assume no responsibility for injury, damage or death to any person, possessions or belongings while visiting or handling cattle on or off our premises.

Herd Health: All cattle selling have been vaccinated, dewormed, and passed a veterinarian inspection and semen evaluation.





Trevor & Cheryl Branvold
Box 205
Wawota, SK, S0G 5A0
306-577-9141



Sign up for Online bidding at:



www.edjeauctions.com